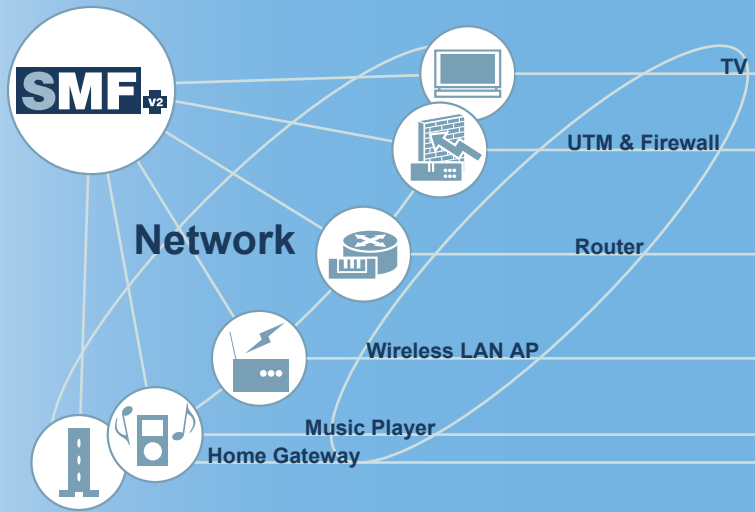


Revolutionizing Network Services

SMFv2



'Auto-Configuration' and 'Complete Control' for Any Device

SMFv2 is a new management framework which realizes 'auto-configuration' and 'complete control' for any network-connectable device. The service adaptor of SMFv2 can receive various network services once they are connected to the network. The complexity of device configuration will be eliminated and complete control can be exerted remotely via the server.

SMFv2 assists the development of secure and advanced network services. For example, it can be utilized to develop an enterprise-oriented service in which network appliances are centrally controlled via the server, or a consumer-oriented service in which automated software update is provided for household appliances.

Auto-Configuration

A Function to Automate Initial Configuration

The service adaptor will automatically access the LS once the power is turned on. The LS provides the service adaptor with configurations to locate the RS. In the RS the service adaptor obtains configurations necessary to operate according to user requirements. The service adaptor can be automatically configured even when it is initially activated, allowing anybody to setup the device.

Service Control

A Function to Centrally Control and Manage the Service Adaptor

SMFv2 realizes centralized control over the service adaptor. The RS collects information such as status and log of the service adaptor via 'Heartbeat', a packet unique to SMF. The acquired information can always be viewed via the user interface, or notified by Email. The RS offers various functions to realize efficient monitoring and management of the service adaptor.

Service on Demand

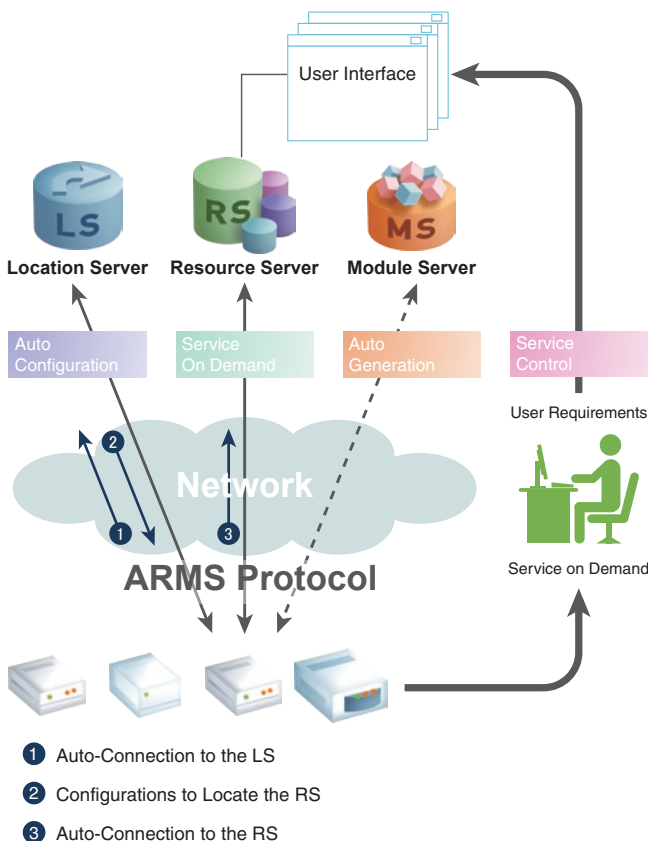
A Function to Change Configurations via the Server

In the SMFv2 system, configurations are created and stored on the server. Configuration changes can be reflected to the device by push-distributing the configurations. Configuration changes can always be made regardless of the status of the service adaptor since even the disconnected will automatically acquire the up-to-date configuration once they acquire network connection.

Auto-Generation

A Function to Automatically Generate, Add and Delete Functions

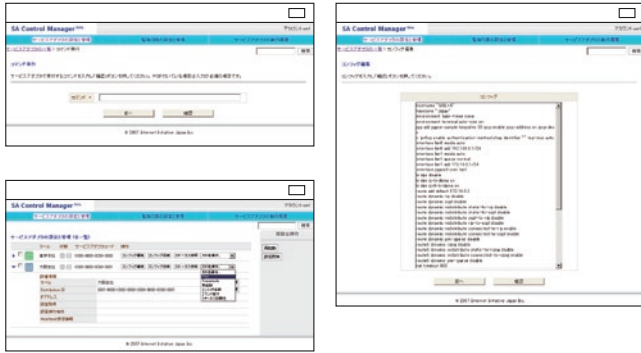
A function corresponding to a configuration set by a user is automatically generated by downloading add-on module from the MS. The service adaptor will incorporate only necessary modules and automatically delete unnecessary ones, allowing full utilization of limited resources. By providing the service adaptor with necessary functions only, SMFv2 realizes optimal network services.



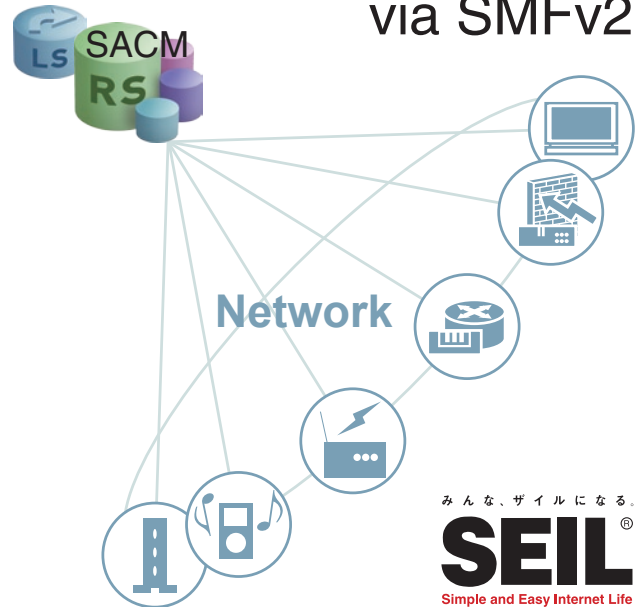
SA Control Manager

Control over Every Service Adaptor

SA Control Manager is a system which realizes centralized management of the service adaptor via the user interface. Configurations for the service adaptor are retained on the server, allowing remote operations of the service adaptor (i.e. acquisition of status information and execution of administrative command). Initial configuration and daily maintenance by directly accessing the device is no longer necessary. SA control manager will offer 'auto-configuration', 'service control' and 'service on demand' to every service adaptor.

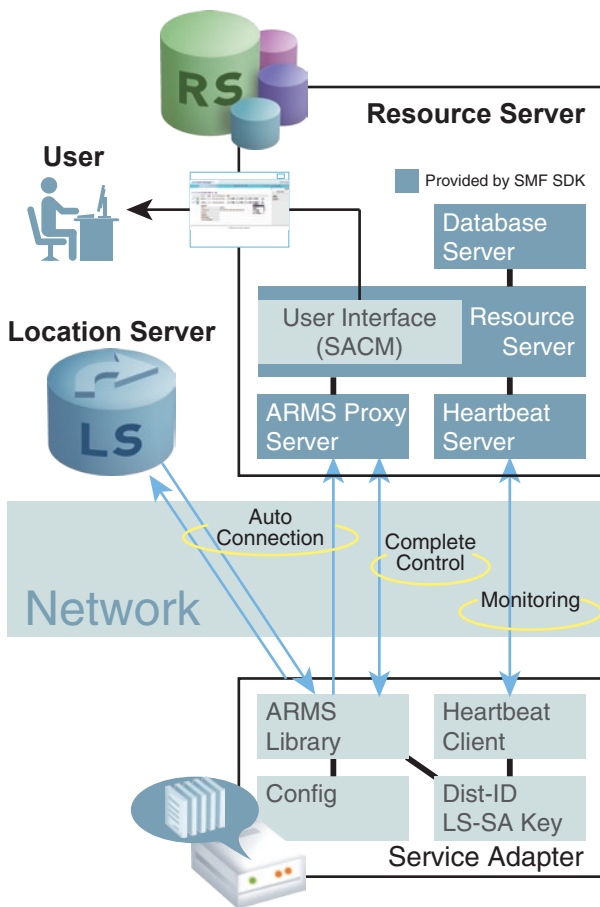


Control Any Device via SMFv2



みんな、ザイルになる。
SEIL
 Simple and Easy Internet Life

Mechanism and Components of SMFv2



• Please refer to [www://www.seil.jp/](http://www.seil.jp/) for further detail

LS System

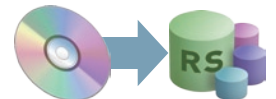
Providing Configurations to Locate the RS



The LS is a system operated by IJJ, to which every service adaptor is designed to access once they acquire network connection. Based on a 'Distribution ID', an individual ID given to every service adaptor, the LS provides the service adaptor with configurations necessary to reach an appropriate RS.

SMF SDK

A Kit to Develop the RS System



SMF SDK is a development kit composed by software, library and documents, which are used to construct the system of SMFv2. SMF SDK assists the development of the RS system oriented to a various kind of service.

ARMS Library

Embeddable Module to Realize 'Auto-Configuration'



ARMS library is a software module to be embedded into CPE. ARMS library is implemented with 'ARMS protocol' in which operations required in the SMFv2 system are defined as 'messages'. Any device can be turned into a 'service adaptor' of SMFv2 by simply embedding ARMS library. Currently, two different types of ARMS library are offered for free: one for NetBSD and another for Linux. Consultation regarding other OS is also available.